

## GENERAL SPECIFICATIONS

DIMENSIONS - 5' (1524mm) X 2'-10" (864mm) X 6'-11" (2108mm)  
ICE DISPENSER - GENERATES 400 LBS. (182 KG.) PER DAY OF NUGGET ICE  
PELLETS WITH 50 LBS. (23 KG.) STORAGE CAPACITY  
LIGHTING - FLUORESCENT, AT TOP OF UNIT AND OVER THE COUNTERTOP  
COUNTERTOP - 14 GA. POLISHED STAINLESS STEEL, 30" (762mm) DEPTH  
WITH SINK AND BACKSPLASH  
SIDES, BACK & FRONT - 18 GA. STAINLESS STEEL  
CABINET - ABOVE COUNTER CABINET WITH ADJUSTABLE SHELVES  
(ONE BASE CABINET WITH ADJUSTABLE SHELVES  
IF OPTIONAL REFRIGERATOR IS NOT ORDERED)  
ELECTRICAL RECEPTACLES - (2) DUPLEX RECEPTACLES WITH GROUND FAULT  
INTERRUPTER (GFI), (1) W/ LIGHT SWITCH, 120V AC  
15 AMPERE RATED, THREE WIRE TYPE, LOCATED  
ON BACK WALL OF STATION  
PLUMBING - SINK: 16 GA. STAINLESS STEEL, RADIUS CORNERS  
14"W (356mm) X 16"L (406mm) X 6"D (152mm)  
FAUCET: DECK MOUNTED, HOT AND COLD WATER VALVES WITH  
SWIVEL GOOSENECK SPOUT  
DRAIN: 1 1/2" (38mm) O.D. WITH NON-PLUGGING CUP STRAINER  
TOWEL DISPENSER - LOCATED ON SIDE PANEL OF UNIT ABOVE COUNTER  
TO DISPENSE STANDARD SIZE PAPER TOWELS  
CUP DISPENSER - LOCATED ON SIDE PANEL TO DISPENSE STANDARD PAPER CUPS  
WASTE BIN - SLIDES OUT FOR ACCESS  
AIR GRILLE - FOR SOFFIT (ENCLOSED APPLICATION)  
ELECTRICAL - 208/230-60-1 INPUT TO BREAKER BOX (LOCATION SHOWN IN TOP VIEW)  
120-60-1, 80 AMPS OUTPUT FROM BREAKER BOX TO APPLIANCES  
NSF AND UL LISTED  
SHIPPING WEIGHT - 970 LB. (440 KG.)  
SHIPPING VOLUME - 126 CU. FEET (3.57 CU. METERS)

### AVAILABLE OPTIONS:

- INSTANT SUPER-HOT (190°F) WATER DISPENSER FOR BEVERAGES
- MICROWAVE OVEN
- UNDERCOUNTER REFRIGERATOR (NSF)
- UNDERCOUNTER FREEZER
- SINGLE OR DUAL HOT PLATE
- SOAP DISPENSER
- COFFEE MAKER
- SLOPING DUST TOP (REQUIRES FINISHED END PANELS)
- FINISHED END PANELS FOR FREE STANDING APPLICATIONS

NOURISHMENT STATION, FIVE (5) FOOT, MODEL NSM5

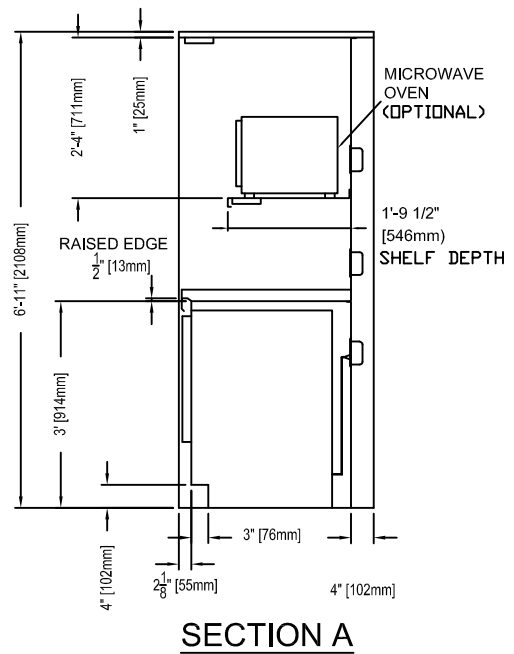
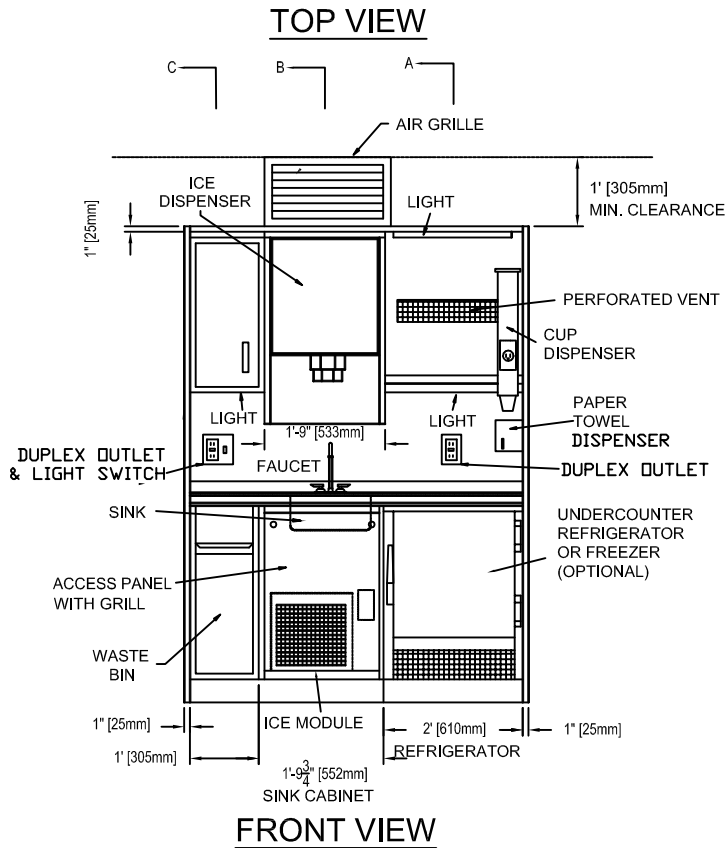
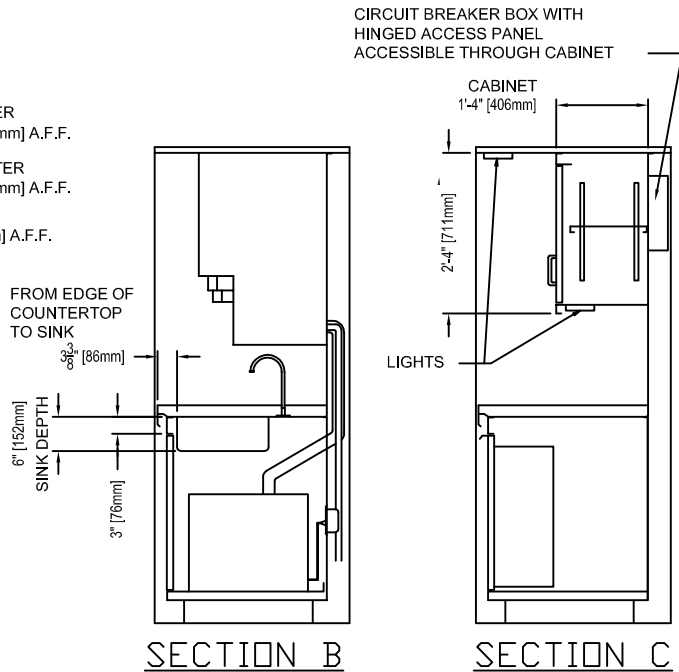
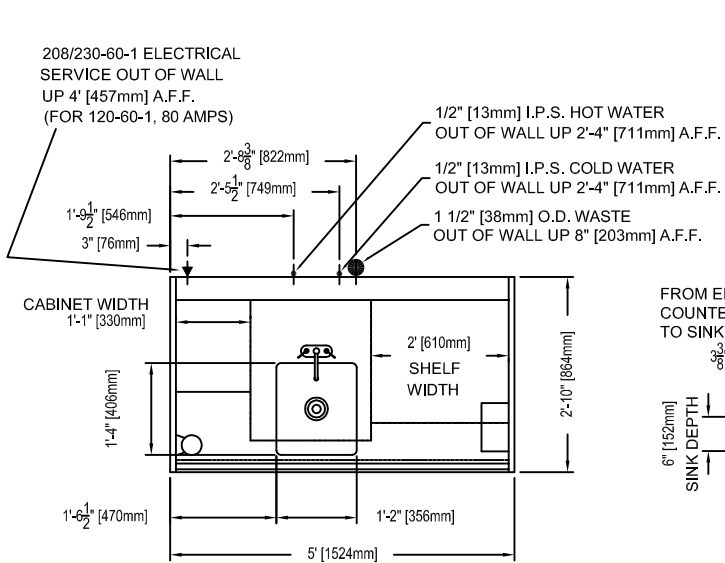
DRAWING IS FOR SALES REFERENCE ONLY

DRAWING BY LJS SCALE N.T.S. DATE 01/16/15

THE INFORMATION CONTAINED IN THIS DRAWING IS THE SOLE PROPERTY OF CSI/JEWETT. USE OF THIS INFORMATION WITHOUT THE EXPRESSED WRITTEN PERMISSION OF CSI/JEWETT IS STRICTLY PROHIBITED

**CSI/JEWETT**

6910 WEST RIDGE ROAD  
FAIRVIEW, PA 16415  
TEL: (814) 474-9353  
FAX: (814) 474-5797



**NOURISHMENT STATION, FIVE (5) FOOT, MODEL NSM5**

THE INFORMATION CONTAINED IN THIS DRAWING IS THE SOLE PROPERTY OF CSI/JEWETT. USE OF THIS INFORMATION WITHOUT THE EXPRESSED WRITTEN PERMISSION OF CSI/JEWETT IS STRICTLY PROHIBITED

DRAWING IS FOR SALES REFERENCE ONLY

DRAWING BY LJS SCALE N.T.S. DATE 01/16/15

**CSI/JEWETT**

6910 WEST RIDGE ROAD  
FAIRVIEW, PA 16415  
TEL: (814) 474-9353  
FAX: (814) 474-5797