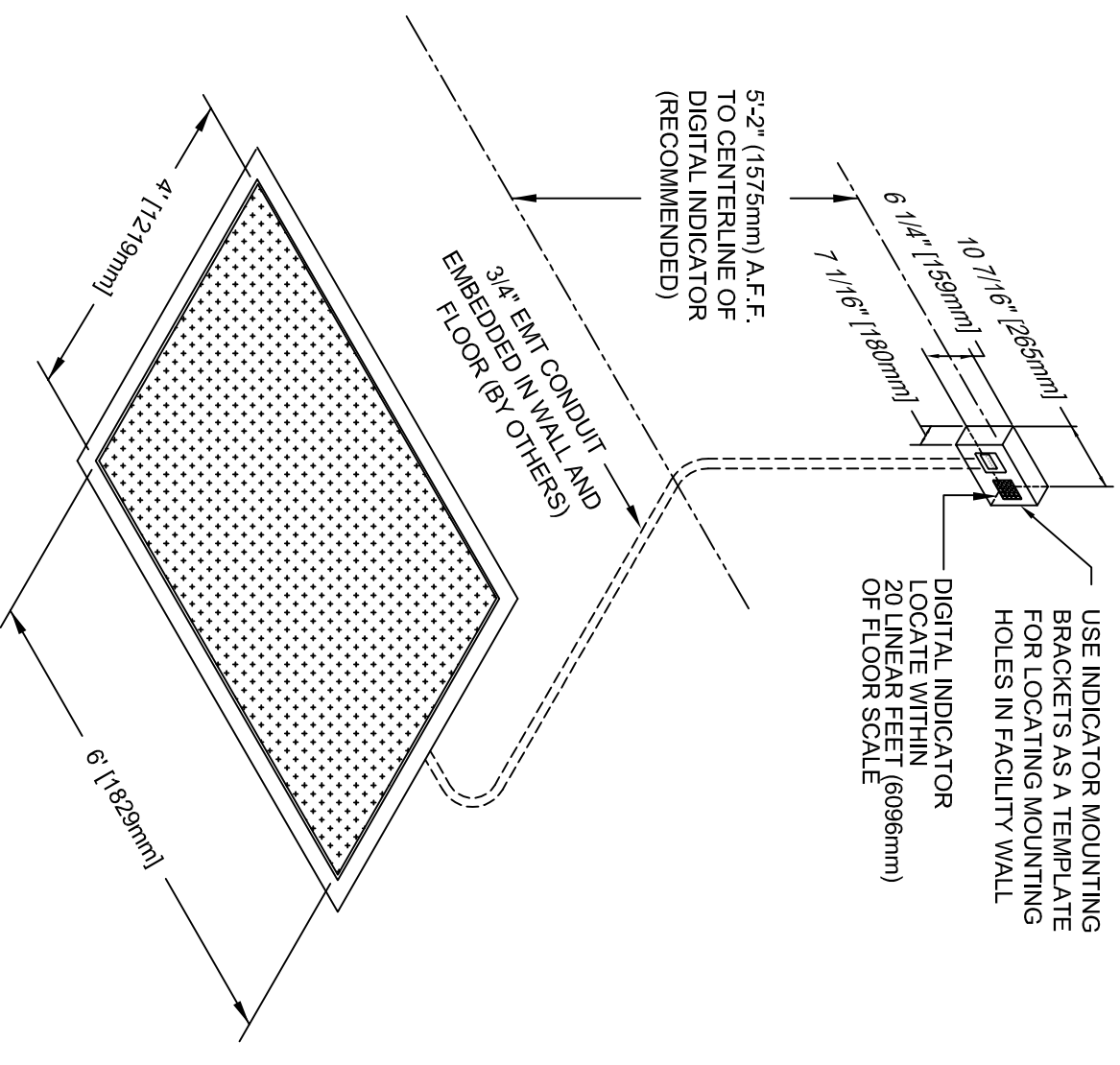
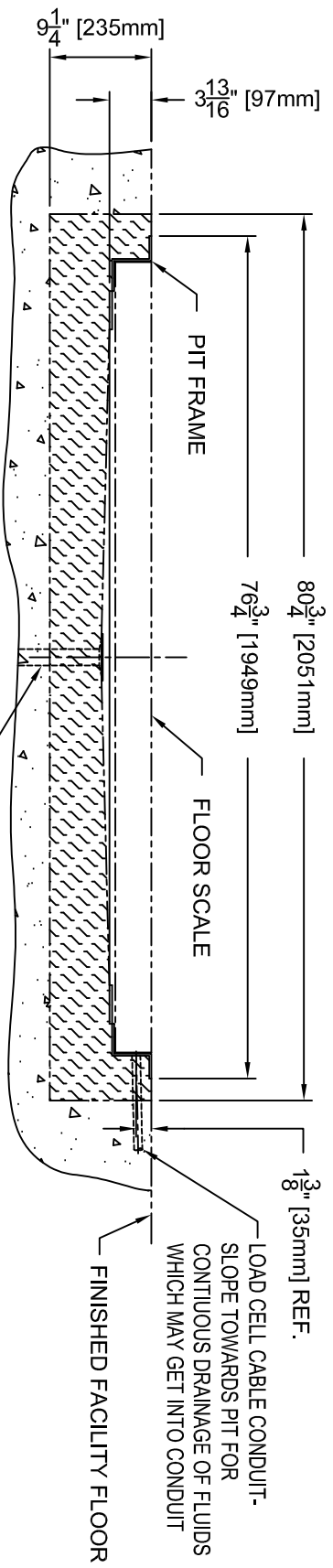
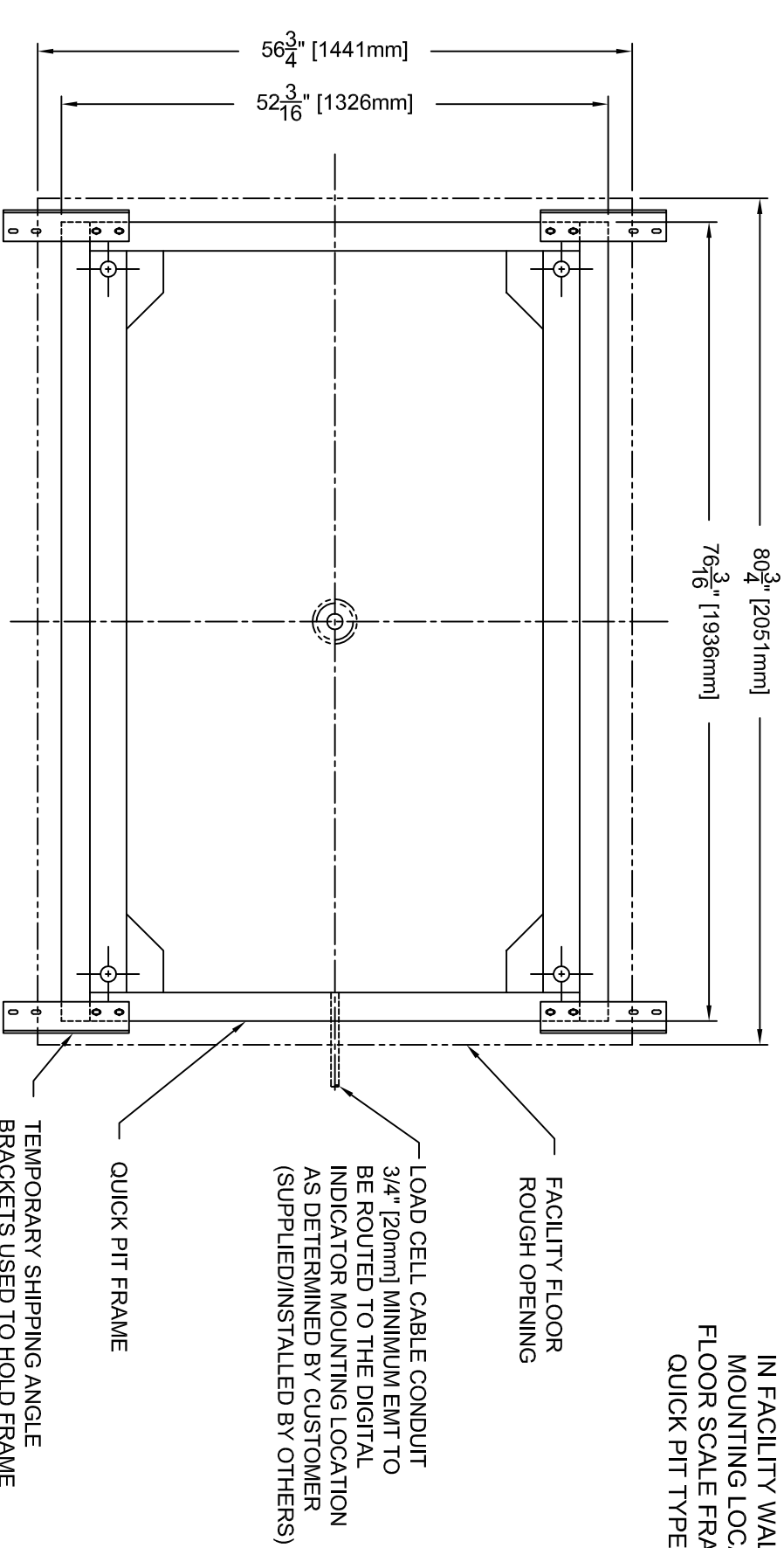


**GENERAL NOTES:**

1. PREPARE OPENING FOR THE PIT TO THE OVERALL DIMENSIONS AND DEPTH AS SHOWN BELOW. NOTE THE REQUIREMENTS AND LOCATION FOR THE INSTRUMENT CABLE CONDUIT (PROVIDED BY OTHERS).
2. ATTACH THE FOUR (4) SHIPPING ANGLE BRACKETS TO THE QUICK PIT FRAME AS SHOWN BELOW. THESE BRACKETS ALLOW THE FRAME TO REST LEVEL WITH THE SURROUNDING SURFACE DURING INSTALLATION. LOWER THE QUICK PIT FRAME INTO THE PIT OPENING AND CENTER.
3. USE A MINIMUM 3000 PSI (20.7MPa) STRENGTH CONCRETE AT 28 DAYS WITH 5-7% AIR ENTRAINMENT. POUR CONCRETE LEVEL WITH ADJACENT SURFACE, MAKING SURE UNDERSIDE OF BASE PLATES ARE COMPLETELY SUPPORTED BY CONCRETE.
4. AFTER CONCRETE HAS CURED, LOWER THE SCALE PLATFORM INTO THE QUICK PIT FRAME AND PROCEED WITH THE REMAINDER OF THE SCALE INSTALLATION AS SPECIFIED IN THE INSTALLATION AND OPERATION MANUAL.

**GENERAL SPECIFICATIONS**

PLATFORM SIZE - 4' [1219mm] x 6' [1829mm] x 3.5" [89mm]  
 CONSTRUCTION - HEAVY GAUGE MILD STEEL CONSTRUCTION, WITH TWO-PART EPOXY PAINT  
 LOAD CELL - (4) HERMETICALLY SEALED, STAINLESS STEEL, 350 OHM, WITH ROCKER FOOT LOAD CELL SUSPENSION  
 WEIGHT CAPACITY - 5,000 LBS. [2,268 KG]  
 JUNCTION BOX - IP69K TYPE, STAINLESS STEEL, BUILT-IN, WITH TOP ACCESS  
 OPERATING TEMPERATURE - 14°F TO 104°F [-10°C TO 40°C]  
 DIGITAL INDICATOR - HARSH/DESK MOUNT ENCLOSURE WITH ANALOG SCALE TYPE ONE SERIAL INTERFACE PORT, 120 VAC POWER CORD, (1) PAIR OF SWIVEL TYPE WALL MOUNTING BRACKETS. CUSTOMER TO SUPPLY A 120V/60HZ/1PH 15 AMP OUTLET IN FACILITY WALL AND WITHIN 4' [1219mm] OF CUSTOMER DETERMINED MOUNTING LOCATION FOR DIGITAL INDICATOR.  
 FLOOR SCALE FRAME - HEAVY GAUGE MILD STEEL CONSTRUCTION, QUICK PIT TYPE FOR RECESSED SCALE INSTALLATION.



**NOTE:**

A DRAIN MAY BE LOCATED (BY OTHERS) IN THE CENTER OF THE PIT IF DESIRED. IF A DRAIN IS INSTALLED, THE RECOMMENDED SLOPE IS 1/2" PER FOOT.

**PIT FRAME**

REV.	DATE	REVISION	APPROVED	DATE

THIS PROJECT WILL BE REDESIGNED FOR MANUFACTURING AND RECEIVED APPROVED DRAWINGS MAY AFFECT THE FINAL PRICE AND DELIVERY DATE

AMENDING AND RESUBMIT

APPROVED WITHOUT CHANGES

REVISE AND RESUBMIT

DATE: 9/22/10

FORM: SR2168

CSJ/LEWETT

800 WEST BRIDGE ROAD  
 FARMERS PA 16815